

# NORTHEASTERN UNIVERSITY



## Arlinton Campus



**HANDBOOK**  
**2024-2025**



# TABLE OF CONTENTS

## **INTRODUCTION**

---

Welcome to Northeastern	1
University Arlington Campus	

## **CAMPUS LOCATION**

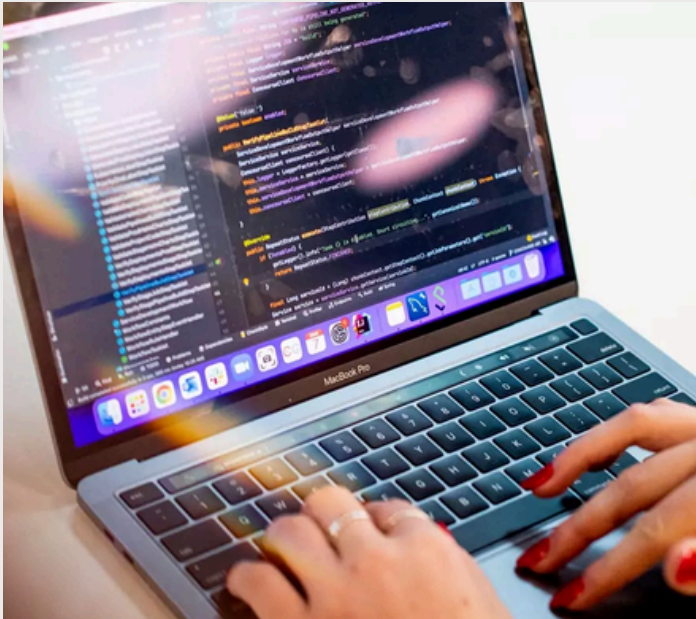
---

Campus Building View	5
Campus View	6

## **PARKING**

---

Parking	11
---------	----



## **CAMPUS FACILITIES**

---

	13
Bicycles	14
Fitness Center	14
Campus Lockers	16
Robin-Room Reservation System	17
Roof Deck	19
New Capital Bikeshare Discount Program	20

## **HOUSING**

---

Housing	22
---------	----





# TABLE OF CONTENTS

## **TRANSPORTATION**

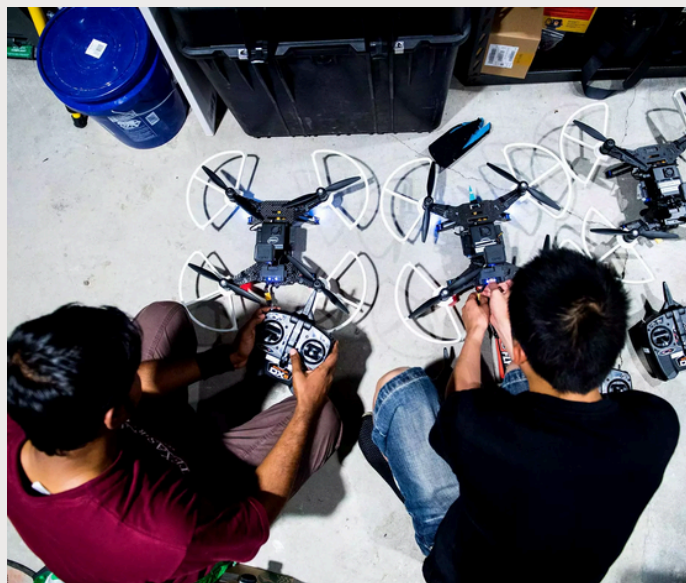
---

Transit Guide	26
Train	27
Bus	27
Bicycle	28
Other Micromobility Options	28
Walk	28
Ride Apps/Taxis	28
Rental Cars	28
Getting to Campus	28
Accessibility Resources	30

## **STAFF AND FACULTY**

---

Staff and Faculty	31
-------------------	----



## **ARLINGTON CAMPUS SAFETY INFORMATION**

---

Arlington Campus Safety Information	39
-------------------------------------	----

## **OFFICE OF GLOBAL SERVICES (OGS)**

---

Office of Global Services(OGS)	41
--------------------------------	----

## **ACADEMIC ADVISING**

---

Academic Advising	43
-------------------	----

## **ACADEMIC CALENDAR**

---

Academic Calendar	45
-------------------	----



# TABLE OF CONTENTS

## **GLOBAL LEARNER SUPPORT (GLS) TUTORING**

---

Global Learner Support(GLS) 45

Tutoring

## **ACCREDITATION**

---

Accreditation 45

## **STUDENT FINANCIAL SERVICES**

---

Student Financial Services 46

## **DISABILITY RESOURCE CENTER**

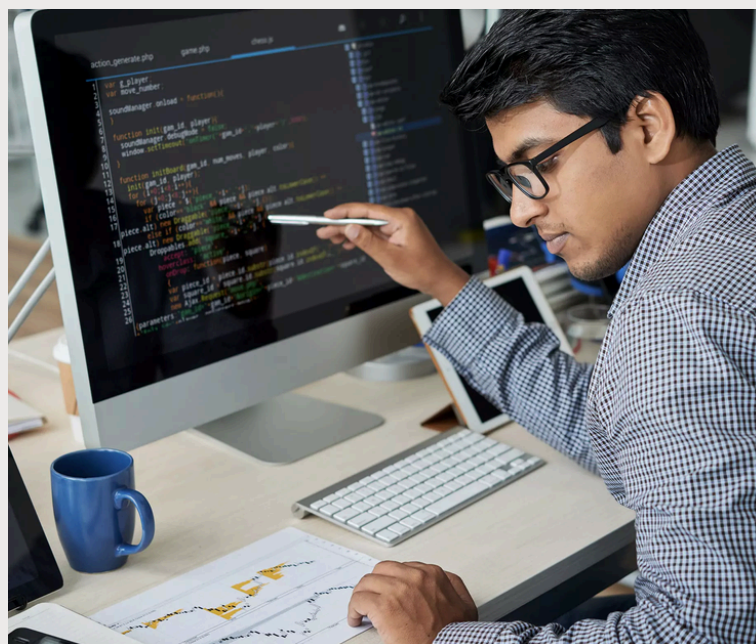
---

Disability Resource Center 46

## **PLACES TO VISIT**

---

Places to Visit 47



## **RESTAURANTS NEAR CAMPUS**

---

Restaurants near Campus 53

## **INTEREST GROUPS ON CAMPUS**

---

Interest Groups on Campus 54

## **BLOGS**

---

Blogs 56





# **Welcome to Northeastern University Arlington Campus!**



**Jamie Jones Miller**

**Regional Dean and CEO**

Greetings and a warm welcome to the vibrant Arlington Campus of Northeastern University! We are thrilled to have you as part of our community, and our team of dedicated student ambassadors from Northeastern University is excited to support you on this exciting journey.

Within the pages of this comprehensive handbook, tailored specifically for Northeastern students in Arlington, you'll find a treasure trove of valuable information and resources carefully curated to enhance your experience here. Whether you're seeking guidance on navigating the campus, tips for making the most of your time in Arlington, or resources to empower your academic success at Northeastern University, we've got you covered. As you embark on this chapter of your academic and personal growth at Northeastern, we encourage you to not only absorb the knowledge within these pages but also to actively engage with the rich tapestry of opportunities available to you. From academic pursuits to extracurricular activities, there's a wealth of experiences waiting for you to explore at Northeastern University.

Our Arlington Campus is not just a place of learning; it's a community that thrives on the diversity and unique contributions of each student. We hope this handbook serves as a valuable companion on your journey at Northeastern University, providing insights, guidance, and inspiration as you navigate the exciting challenges and opportunities that await.

So, dive in, make connections, and embrace the multitude of experiences that the Arlington Campus of Northeastern University has to offer. Your time here is not just about academics; it's about personal growth, forging lifelong connections, and creating memories that will last a lifetime.

Once again, welcome to the Arlington Campus of Northeastern University—we're delighted to have you here, and we look forward to witnessing your incredible journey unfold!





# 2. CAMPUS LOCATION



Nestled in the vibrant core of Rosslyn, Arlington County, with our prime location at 17th Street North in the Arlington Tower, our campus is at the epicenter of the nation's Capital Region. Our campus occupies the 15th-floor space, where you'll discover cutting-edge learning environments meticulously designed to promote collaboration, provide conducive spaces for focused study sessions, foster networking opportunities with peers and potential employers, and serve as a versatile venue for a diverse array of community events.

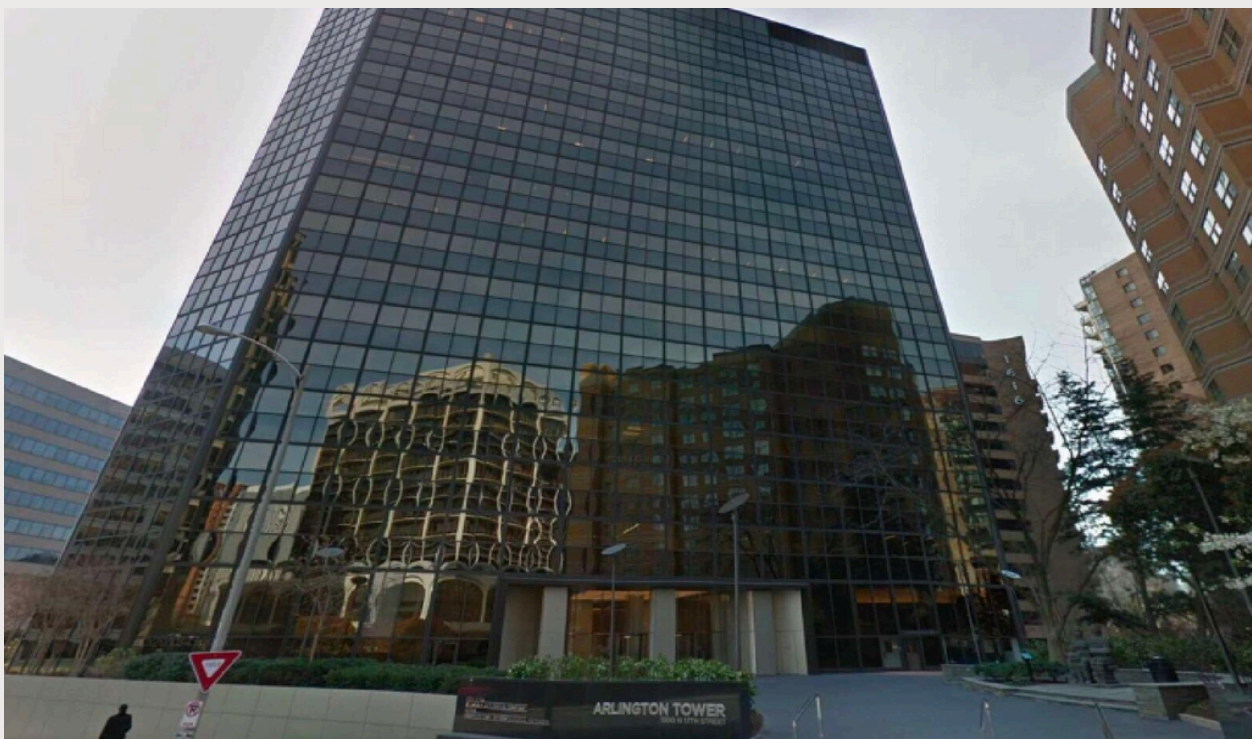
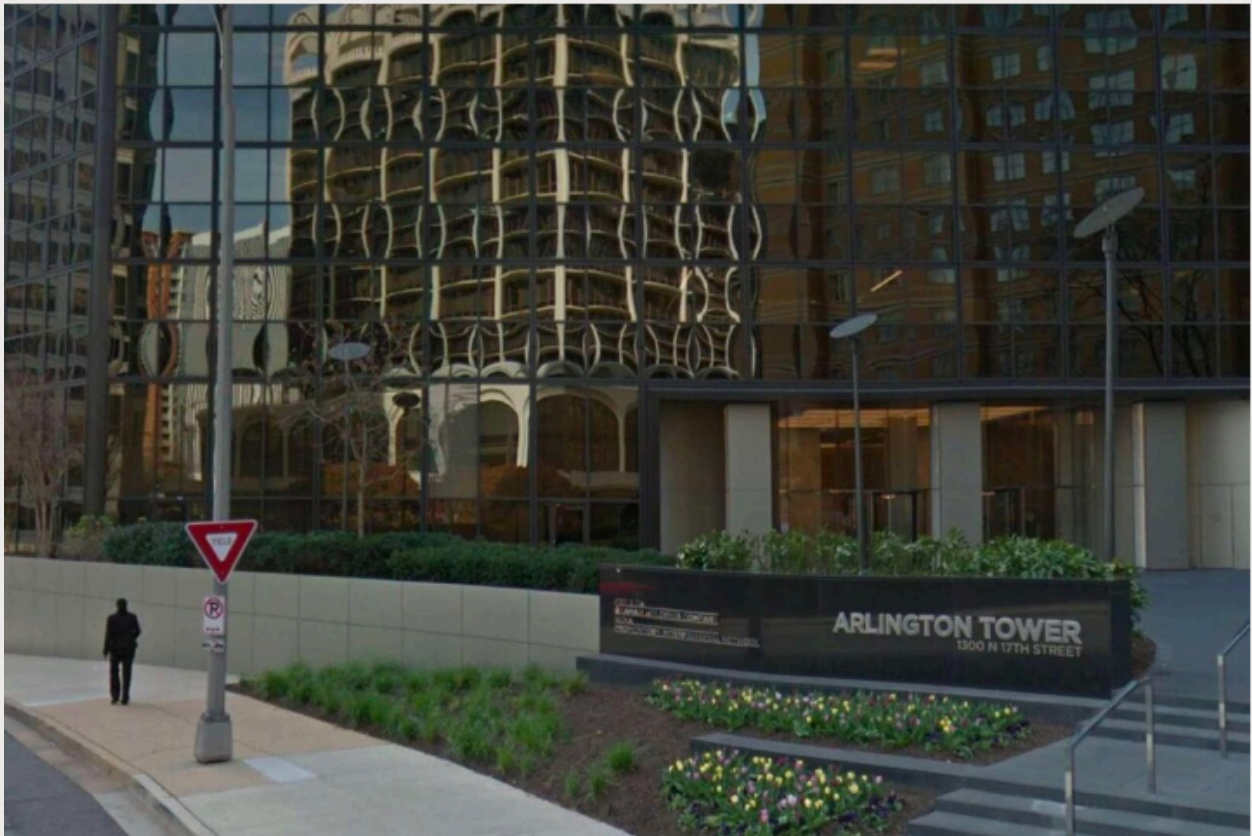
Beyond the educational sphere, our building offers an array of amenities aimed at enhancing your overall experience. A fitness center awaits, providing a convenient option for those seeking wellness breaks. The rooftop area, with its panoramic views of Arlington, VA, and Washington, DC, offers a serene escape for moments of respite and inspiration. Cyclists will find convenience in our bicycle lockers equipped with ample supplies, supporting sustainable commuting options. Additionally, a vibrant cafe on campus caters to your refreshment needs, establishing a lively hub for social interaction.

Notably, our location houses the Kostas Research Institute for Homeland Security on the 14th floor, adding an intellectual dimension to our community and contributing to the rich and diverse learning environment that defines our space. In essence, our facility transcends the conventional educational setting, serving as a dynamic hub where learning, collaboration, and community engagement seamlessly converge, supported by a range of amenities that cater to both academic and personal needs.

You can reach us at our address in Arlington Tower, Suite 1500, 1300 17th Street North, Arlington, VA 22209.



## 1. Campus Building view





## 2. Campus view



















# 3. PARKING



The building has its own five-level parking garage, operated by [Colonial Parking](#), with entrances on 17th Street North and Fort Myer Drive. To access the Fort Myer Drive entrance, use the right lane of Fort Myer Drive and go under the overpass. Do not use the left lane (Google Maps/GPS/Siri will try to direct you to do so). The entrance is mid-way under the overpass. Daily parking is available for a \$16 daily maximum, or \$175 per month for an unreserved spot if you are a student. You may request a discounted student parking pass (\$125 per month) by contacting Haregewoyn Asnakew ([hasnakew@ecolonial.com](mailto:hasnakew@ecolonial.com)) and letting her know that you are a Northeastern student.

Information about other parking garages near campus can be found [here](#). Limited street parking is available.





# 4. CAMPUS FACILITIES



## 1. Bicycles

The Northeastern Arlington Campus offers students a BICYCLE ROOM on campus, where you can park your bicycles and access basic bicycle repair supplies as needed.

To get access to the Bicycle Room, first fill out the Arlington Tower Bike Room Waiver Form (distributed during orientation) and return it to the Campus Operations Manager, Grace Quigley. If you do not receive the form, reach out to Grace directly to get a copy. Please note - you can leave the employer name and access card number fields empty when completing the form.

Individuals who use the Bicycle Room will use their Husky IDs to swipe in and out.

The Bicycle Room is located on floor B1 of the building's parking garage.

## 2. Fitness Center

As part of our campus facilities, the campus also offers a FITNESS CENTER that is free for all students to use.

The Fitness Center has equipment such as free weights, cardio machines, and weight lifting machines. Once you're done with your workout you can freshen up with the complimentary toiletry items provided in the Fitness Center restrooms.

Access to the Fitness Center is granted by completing the Fitness Center Waiver Form (distributed during orientation) and returning the form to the Campus Operations Manager, Grace Quigley. If you do not receive the form, reach out to Grace directly to get a copy.

The Fitness Center is open during the following hours:

Monday through Thursday: 9AM to 9:30PM

Friday: 9AM to 4:30PM

Saturday: 11AM to 3PM

Sunday: Closed

Note - Individuals interested in utilizing campus facilities should fill out the appropriate waiver forms and return them to the Campus Operations Manager, Grace Quigley. You can leave the Employer Name and Access Card Number fields empty (they will be completed by the Campus Operations Team).

A glimpse of the Fitness Center:



### 3. Campus Lockers

The campus also has lockers available for single-day use on a first-come, first-serve basis. Instructions on how to use campus lockers are located on the inside of each locker. The lockers are located directly off of the elevators near the faculty/staff office area of campus.

#### Quick Instructions on Lockers

##### “To Lock” -

1. Close the door.
2. Make sure the knob is pointed up to the “unlocked” icon, then set any 4-digit code.
3. Turn the knob to the “locked” icon.
4. Scramble the dials.

##### “To Unlock” -

1. Enter your code.
2. Turn the knob to the “unlocked” icon.
3. Open the door.
4. Keeping the knob facing the “unlocked” icon, scramble the dials for the next user.

Note - If you cannot re-open the locker, or forget your 4-digit code, see a member of the Operations team to access the locker using the master key.





## 4. Robin - Room Reservation System

We know how consuming coursework can be, and how important it is to collaborate on your projects in a space without disturbance. That's why our Campus provides multiple spaces for students to utilize for team discussions, solo and group studies, office hours, and more.

Students can reserve a space through Robin, a scheduling platform used by Northeastern to manage room reservations across all campuses. All students will have access to Robin to book select huddle rooms on campus.



When you open the Robin application, you will navigate to the 15th floor Arlington Tower office, and select the relevant date and time to view available spaces. Those spaces will be highlighted in green, and you can select the space you want to book to view any amenities and policies attached to that room (like booking time limits). If you have a booking need that goes beyond the current allowances set in Robin, reach out to the Campus Operations Manager, Grace Quigley for assistance. Once you've selected the space you want to book, select "Book Meeting." From here, you can name your event, edit the date/time range, adjust recurrences, and invite guests. Select "Book Now" when you've entered all the required information, and your booking reservations will be automatically added to your Outlook calendar.

You can check the following Northeastern ITS guides for more information:

[Booking Robin in Outlook](#), [Managing existing Robin reservations](#), and [Reserving a space via the Robin app](#).

Note - All new and visiting students will need to be added to the Arlington campus in Robin by ITS. New users must connect their Microsoft 365 account when booking a space for the first time. Please reach out to the Campus Operations Manager, Grace Quigley, for questions.

## 5. Roof Deck

Do you love a peaceful and mesmerizing view that oversees the city?

Great News! We have the most spectacular view from our Campus Roof Deck!

We have wonderful views of the Potomac River and the DC skyline. It is the perfect space to host breathtaking events and make use of our modern lounge furniture.

The building management team allows 20 students at a time on the Roof Deck. While no waiver form is required to make use of the building's Roof deck, check-out for door fobs to access the space is managed by the Operations team. The Roof Deck closes a half hour before the end of campus hours to allow time for fobs to be returned to the Operations team.

Roof Deck Hours:

Monday through Thursday: 9AM to 9PM

Friday: 9AM to 4PM

Saturday: 11AM to 2:30PM

Sunday: Closed.

A glimpse of the Roof Deck:





## 6. New Capital Bikeshare Discount Program

Northeastern University Arlington Campus has partnered with New Capital Bikeshare to create a Student Membership Program - which provides a student discount for their services.

With more than 700 stations to pick up or drop off a bicycle, [CapitalBikeshare](#) is a convenient, affordable, environmentally sustainable, and fun way to commute to campus and get around the area. Information about station locations, instructions for using the bikes, and the app download are available via the above link. The closest station to campus is at North Fort Myers Drive and Wilson Boulevard. Through the Northeastern-Arlington University Membership Program, your annual membership is \$25 (regular cost \$95) with the following additional discounts:



	Single Ride	Day Pass	Northeastern-Arlington University Membership
Pass price	n/a	\$8/day	\$25/year
Bike unlocks	\$1	Free	Free
Classic bike prices	\$.05/minute	45 minutes free, Then \$.05/minute	45 minutes free, Then \$.05/minute
Ebike prices	\$0.15/minute	\$0.10/minute	\$0.10/minute

To sign up, you will need your @northeastern.edu email address and code: **nu482dc88**. You may choose to sign up with your personal or Northeastern email address. If you are asked to verify your email address, enter your Northeastern email address (the flyer refers to this as your work email address).

If you have questions about your account, please contact Capital Bikeshare customer service at <https://lft.to/cabi-support>.

Instructions:

- Go to [capitalbikeshare.com](https://capitalbikeshare.com) and log in or join with your personnel email address.
- Under “Membership”, click “View details”. Then, click “Enter Promo code”.
- Enter your code **nu482dc88** in the pop-up and click “submit”.
- If you’re asked to verify your email, follow the redirect to enter your work email address and click “verify”. An email will be sent to you to complete verification.
- Once verified, you can finish signing up with your discounted rate
- **If you’re already a Capital Bikeshare member** - turn off auto-renew by logging into your account on [capitalbikeshare.com](https://capitalbikeshare.com) and once your membership expires, you can use your promo code.
- **If you already have a discounted membership** - you can use your promo code to renew your membership starting 30 days before your plan ends.

# 5. HOUSING





## Neighborhoods Near the University

- Arlington
- Ballston
- Clarendon
- Columbia Pike
- Courthouse
- Crystal City
- Langston Boulevard
- Pentagon City
- Rosslyn
- Shirlington
- Westover

## Apartments Search Websites

Apartments.com - <https://www.apartments.com/>

ApartmentFinder - <https://www.apartmentfinder.com/Virginia/Arlington-Apartments>

Rent - <https://www.rent.com/>

RentCafe - <https://www.rentcafe.com/>

Trulia - <https://www.trulia.com/>

## Group-Oriented Housing Options

International Student House (ISH)

1825 R Street NW, Washington, DC 20009

Dupont Circle Metro Station (Red Line) is 2 blocks from the House.

<https://www.ishdc.org/> (202)232-4007

The International Student House of Washington DC, a non-profit organization, provides an exceptional residential experience to a highly diverse international community of graduate students, interns, and visiting scholars. The House promotes intercultural dialogue, encourages life-long connections, and fosters global citizenship. International Student House offers below-market room and board.

All room rates are per person and include a furnished room – perhaps with a roommate(s)- and 12 meals a week, internet, utilities, and laundry. The international house includes 3 residential buildings and beautiful common spaces including a large garden area, library, shared study room, dining hall, and great room.

The ISH has a rolling application process, with residents moving in and out on the 1st and 15th of every month. Applications are made through an online portal.

The International Student House of Washington DC began in 1934 when a small group of Quakers explored how they might contribute to peace and a better understanding among people of diverse national backgrounds. Additional historical information is available on the ISH website.

## Washington Intern Student Housing (WISH)

Capitol Hill, Washington DC

Gallery Place-Chinatown (Green, Red & Yellow lines) and Metro Center (Blue, Orange & Red lines) metro stations are within walking distance

<https://internsdc.com/> (202)548-2720

Live where the action is this election year and join a dynamic and diverse community in the heart of the nation's capital. WISH is more than a safe, convenient place to live- it's an experience that changes lives.

WISH has established special rental rates for Northeastern-Arlington Students. These special rates are for housing at The Congressional Apartments and the Capitol East House. All room rates are per person, per month, including furnishings, laundry, utilities, and kitchens. There is no drinking on the premise and overnight guests are not allowed. There is a four-month lease minimum for rentals.

## Some Apartment Housing Options in Arlington, Alexandria, and Fairfax, VA

Dittmar Housing has furnished and unfurnished apartment properties in Arlington, Alexandria, and Fairfax, VA. Sophie Mao, Marketing Director for Dittmar, has shared the following information about the properties:

- International students can apply online with no US bank/US address. They will need a form of payment for the online application. For furnished apartments, people with no SSN will be charged a \$1,000 security deposit (returned at the end of the lease). People with an SSN will not be charged a security deposit.
- There are 21 Dittmar properties in Arlington/Alexandria/Fairfax with both furnished and unfurnished options.
- Courtland Towers, Randolph Towers, and Virginia Square Towers are three properties near the Northeastern- Arlington Campus that have furnished options- all of them have gyms. All are close to the metro.
- Fees will differ based on the apartment complex. For example, some apartments have a one-time, \$400 application fee, plus a \$50 charge per person applying to the apartment.
- Students may jointly apply with roommates to Dittmar apartments online. They limit their unit capacities to 3 people / 1-bedroom unit; 5 people / 2-bedroom unit; 7 people / 3-bedroom unit.



# 6. TRANSPORTATION



© Arlington Transit

## 1. Transit Guide

This [Local Transit Guide](#) offers information to facilitate your travel within the National Capital Region (NCR) and get to campus.

Our Campus Address is: 1300 17th Street North, Suite 1500, Arlington VA, 22209 - located in the Rosslyn neighborhood of Arlington.

## 2. Train

The National Capital Region (NCR) has a robust railway system for local commuting:

- [Metro](#)(WMATA) is the local subway system and connects DC, MD, and VA.
- [MARC](#) commuter rail connects DC, MD, and West Virginia.
- [VRE](#) commuter rail connects DC and Northern Virginia (NOVA).

## 3. Bus

There are multiple bus and streetcar options for traveling within the NCR:

- [Metrobus](#)(Via WMATA) serves NOVA, DC, and MD.
- [Arlington Transit \(ART\)](#) serves Arlington County.
- [DC Circulator](#) services DC and into Arlington.
- [DC Streetcar](#) offers free trips through the H Street NE/Benning Corridor in DC.



#### 4. Bicycle

The NCR is a bike-friendly area. If you do not have a bicycle, E-bikes are available for rental via [Lime](#), [Unlimited Biking](#), and [Capital Bikeshare](#).

For more information about cycling in the NCR, visit [Bike Arlington](#) for details about bicycle lane signage, maps, routes for cycling, and other helpful tips. Also, there are paved trails in [Arlington](#), [Alexandria](#), and [DC](#).

#### 5. Other Micromobility Options

Six [scooter services](#) are offered in the area: [Lime](#), [Lyft](#), [Bird](#), [Razor](#), [Skip](#), and [Spin](#). Also, there are paved trails in [Arlington](#), [Alexandria](#), and [DC](#).

#### 6. Walk

Walking is a great option to explore the local area. [Walk Arlington](#) has walking maps to experience the various neighborhoods and public art in Arlington. Also, there are paved trails in [Arlington](#), [Alexandria](#), and [DC](#).

#### 7. Ride Apps/Taxis

RideApp options in the NCR include [Uber](#), [Lyft](#), [ALTO\(DC\)](#), and taxi companies ([Arlington Blue Top Cabs](#), [NOVA Checker Cab](#), [Red Top Cab Arlington](#), [Yellow Cab Alexandria](#), [DC Taxi](#), [Yellow Cab DC](#), and others. Also, [Curb](#) is a leading taxi app in the US.

#### 8. Rental Cars

If you are interested in renting a car by the hour or for the day, [Zipcar](#) offers services in the NCR. Other rental options in the area include [AVIS](#), [Enterprise](#), [Hertz](#), and [KAYAK](#).

#### 9. Getting to Campus

Our Campus is conveniently located in the Rosslyn neighborhood, in the Arlington Tower at 1300 17th Street North, Arlington, VA 22209. We are in suite 1500.

Metro is an easy way to get to and from campus. The Rosslyn Station - on the blue, orange, and silver lines - is a short 5-minute walk away. The nearest bus stop is the ART 61 and is a convenient way to get around the area. The DC Circulator Dupont Circle- Georgetown-Rosslyn bus is also convenient for getting to campus.

For walking and biking, there are paved trails around the area. The Custis Trail is a popular, paved, 4-mile route that begins in Rosslyn and links the Virginia suburbs to DC.

A secure, enclosed bicycle room, with basic bike repairs equipment, is in the parking garage on the level B1 of the campus building. The B1 level garage entrance is on 17th Strret North. We recommend you to bring a bicycle lock.

Information about other parking garages near campus can be found [here](#). Limited street parking is available.



## 10. Accessibility Resources

Individuals who have difficulty using a public fixed route transit may utilize the following programs:

- [Specialized Transit for Arlington Residents \(STAR\)](#) serves Arlington residents with scheduled trips along the ART public fixed bus routes.
- The Washington Metropolitan Area Transit Authority (WMATA) [Accessibility Center](#) provides information and assistance in meeting the accessible transportation needs of its customers, including a reduced fare program, system orientation, and more.
- MetroAccess Paratransit Service is a shared-ride, door-to-door service for eligible customers whose disability prevents them from using the WMATA bus or rail systems.
- Wheelchair-Accessible taxi contact numbers can be found at this [Link](#).



# 7. STAFF AND FACULTY





## Jamie Jones Miller

Regional Dean and CEO

[ja.miller@northeastern.edu](mailto:ja.miller@northeastern.edu)



## Ronna Halbgewachs

Associate Dean and Campus Administrator

[r.halbgewachs@northeastern.edu](mailto:r.halbgewachs@northeastern.edu)



## Emily DeVito

Director of Strategic Partnerships

[e.devito@northeastern.edu](mailto:e.devito@northeastern.edu)





## Grace Quigley

Campus Operations Manager  
[q.quigley@northeastern.edu](mailto:q.quigley@northeastern.edu)



## Danny Arguetty

Wellness Program Specialist  
[d.arguetty@northeastern.edu](mailto:d.arguetty@northeastern.edu)



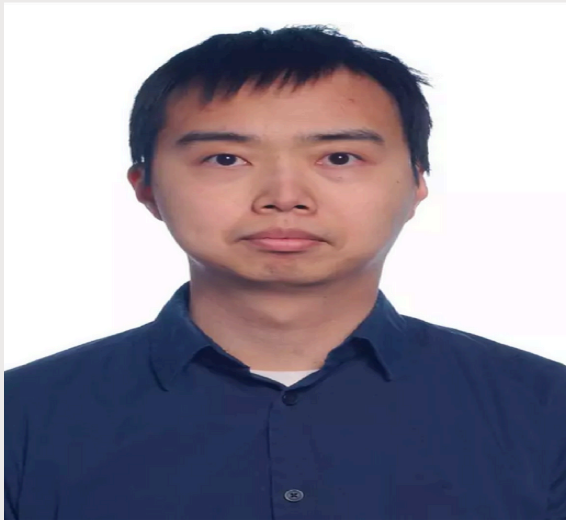
## William "Bill" Cluster

Associate Program Director – Arlington and  
Associate Teaching Professor, College of  
Engineering  
[w.cluster@northeastern.edu](mailto:w.cluster@northeastern.edu)



**Tyler Leslie**

Academic Advisor & Program Manager -  
College of Engineering  
[t.leslie@northeastern.edu](mailto:t.leslie@northeastern.edu)



**Yuze Chen**

Part-Time Lecturer, College of Engineering  
[yuz.chen@northeastern.edu](mailto:yuz.chen@northeastern.edu)



**Shirali Patel**

Part-Time Lecturer, College of Engineering  
[shi.patel@northeastern.edu](mailto:shi.patel@northeastern.edu)

## Daniel “Dan” Peters

Part-Time Lecturer, College of Engineering

[d.peters@northeastern.edu](mailto:d.peters@northeastern.edu)



## Zachary Ringling

IT Support Specialist

[z.ringling@northeastern.edu](mailto:z.ringling@northeastern.edu)



## Mollie Wilson

Special Assistant to the Dean

[mol.wilson@northeastern.edu](mailto:mol.wilson@northeastern.edu)





**Shahida Memon**

Campus Operations Assistant  
[s.memon@northeastern.edu](mailto:s.memon@northeastern.edu)



**Edward Erskine**

Campus Operations Assistant  
[e.erskine@northeastern.edu](mailto:e.erskine@northeastern.edu)



**Lynn Nakazawa**

GLS Specialist-Arlington  
[l.nakazawa@northeastern.edu](mailto:l.nakazawa@northeastern.edu)



**Kara Krebs**

International Student and Scholar Services,  
Office of Global Services

[k.krebs@northeastern.edu](mailto:k.krebs@northeastern.edu)



**Delan Stone**

Marketing Manager

[de.stone@northeastern.edu](mailto:de.stone@northeastern.edu)



**Emily Mazzola**

Assistant Director of Student Recruitment and  
Enrollment

[e.mazzola@northeastern.edu](mailto:e.mazzola@northeastern.edu)



## Neha Gopinath

Graduate Student Ambassador - College of Engineering

[gopinath.n@northeastern.edu](mailto:gopinath.n@northeastern.edu)



# 8. ARLINGTON CAMPUS SAFETY INFORMATION



## Security Team Information

- The Arlington campus is staffed by a security officer during all student campus hours. They will generally be found at the security desk, but they will also do regular patrols of the campus space. The officer on duty offers courtesy safety escorts within a 1-block radius of campus. If you need to contact the on-duty officer, or if you would like to request a safety escort, you may reach them at 571-835-5436.
- The campus building, Arlington Tower, has its own lobby security team. A guard will be on duty from 7am-7pm Monday-Friday in the lobby.

## In an Emergency

- In an emergency, immediately contact Arlington Emergency Services at **911** and notify a member of the Arlington campus team.
- Download the [SafeZone app](#)
  - The **Emergency** button + the **First Aid** button connect directly to local emergency services – equivalent to dialing **911**.

## General Guidelines

- Don't leave valuables or Husky IDs unattended on campus.
- Report any stolen or missing Husky IDs to Grace Quigley ([g.quigley@northeastern.edu](mailto:g.quigley@northeastern.edu)) for deactivation.
- Northeastern University has an emergency notification system in place called NU Alert. All Arlington students are automatically enrolled for local alerts. Keep your contact information up to date for mobile and email notifications via the [Student Hub](#).



# 9. OFFICE OF GLOBAL SERVICES (OGS)





The Office of Global Services (OGS) is a resource for international students and scholars on the Northeastern campuses, providing support and expertise on immigration compliance as well as academic and cultural adjustment concerns.

Website: <https://international.northeastern.edu/ogs/>

Examples of OGS services include (but not limited to):

- Issuance of I-20s • Change of Status to or from F-1
- F-1 Employment Eligibility and Authorization Questions
- Leaves of Absence and the impact on immigration status
- Enrollment Questions and their impact on immigration status
- International Travel concerns
- Questions related to F-1 and J-1 immigration status
- International Student and Scholar Advisor

Kara Krebs is the primary International Student and Scholar Advisor for all students on the Arlington campus.

If you have questions about maintaining your status or applying for benefits (OPT, CPT), we encourage you to review the OGS website. If you have additional questions, you can email Kara at [k.krebs@northeastern.edu](mailto:k.krebs@northeastern.edu).

# 10. ACADEMIC ADVISING



## College of Engineering

### Academic Advisor

Tyler Leslie, Academic Advisor & Program Manager

Contact: [coe-arlington-gradadvising@northeastern.edu](mailto:coe-arlington-gradadvising@northeastern.edu)

### Faculty Advisor

Dr. Bill Claster, Associate Director of Programs – Arlington and Associate Teaching

Professor Contact: [w.claster@northeastern.edu](mailto:w.claster@northeastern.edu)

## College of Social Sciences and Humanities

### Student Services

Sharlene Juste, Associate Director, Student Services and Recruitment

Contact: [s.juste@northeastern.edu](mailto:s.juste@northeastern.edu)

### Registration Support and Degree Audit Review

Jocelyn Powers, Academic Program Administrator

Contact: [jo.powers@northeastern.edu](mailto:jo.powers@northeastern.edu)

### Student Experience and Referrals to Northeastern University Resources

Michele Rosenthal, Associate Director, Academic Operations

Contact: [m.rosenthal@northeastern.edu](mailto:m.rosenthal@northeastern.edu)

### Faculty Advisor

Dr. Tracy Corley, Director of Programs – Arlington and Professor of the Practice, School of

Public Policy and Urban Affairs Contact: [t.corley@northeastern.edu](mailto:t.corley@northeastern.edu)

## Khoury College of Computer Sciences

### Academic Advisor

Brinn Strenger, Assistant Director of Graduate Student Services

Contact: [b.strenger@northeastern.edu](mailto:b.strenger@northeastern.edu)

### Faculty Advisor

Sami Rollins, Director of Computing Programs – Arlington and Teaching Professor

Contact: [s.rollins@northeastern.edu](mailto:s.rollins@northeastern.edu)



## 11. Academic Calendar

<https://registrar.northeastern.edu/article/academic-calendar/>

## 12. Global Learner Support (GLS) Tutoring

### Tutoring

GLS offers 1-on-1 tutoring focused on English conversation, pronunciation, academic and professional writing, academic presentation, and TOEFL/IELTS/CELP exam preparation. If you are interested in discussing issues that impact our lives locally and globally, join Global Topics for Global Learners, a weekly session with NU learners across the network. Sign up for these sessions via the [GLS Tutoring link](#).

### Tutoring Policies

1. Learners are welcome to make three, 1:1 tutoring appointments per week. In-person tutorials can be made up to three hours in advance and online tutorials can be made at any time. Back-to-back appointments are not allowed. When making an appointment, please use your Northeastern University email.
2. Cancellation Policy: If you are unable to attend your appointment, please cancel it at least three hours in advance. For last minute emergencies, please contact your tutor directly. If you are late to your appointment by more than 15 minutes, it will be marked as a missed appointment. After two missed appointments, you will be contacted by Global Learner Support.
3. Please come to your appointment with materials or questions you would like to cover during the session. It is preferred that you use camera and microphone to enhance engagement for virtual appointments.

Make an appointment for GLS tutoring at this [link](#).

## 13. Accreditation

[New England Commission of Higher Education \(NECHE\)](#) is the accrediting body for Northeastern University. Since the first location of Northeastern was in Boston, all the Northeastern campuses fall under NECHE's purview.

Northeastern University has maintained its status as a member in good standing of NECHE, previously New England Association of Schools and Colleges (NEASC), since it was awarded its initial accreditation in 1940. The university was last reviewed by NECHE in 2018 and will be reviewed again in fall 2028.

In Virginia, the [State Council for Higher Education \(SCHEV\)](#) is the Commonwealth's coordinating body for higher education. The Northeastern University in Arlington campus and its degree programs are certified by SCHEV.

## 14. Student Financial Services

The Student Financial Services webpage can be found [here](#). Additional links are listed below:

- [Applying for Aid](#)
- [Billing and Payments](#)
- [Student Employment](#)
- [Forms](#)
- [Policies](#)
- [Support](#)
- [Contact](#)

Graduate Student Financial Services email address: [gradsfs@northeastern.edu](mailto:gradsfs@northeastern.edu)

## 15. Disability Resource Center

The Disability Resource Center serves Northeastern students who have documented disabilities as defined by the Americans with Disabilities Act as Amended (ADAAA) of 2008. Under this definition, a person with a disability is one with a physical, mental, emotional, or chronic health impairment that substantially limits one or more major life Activity.

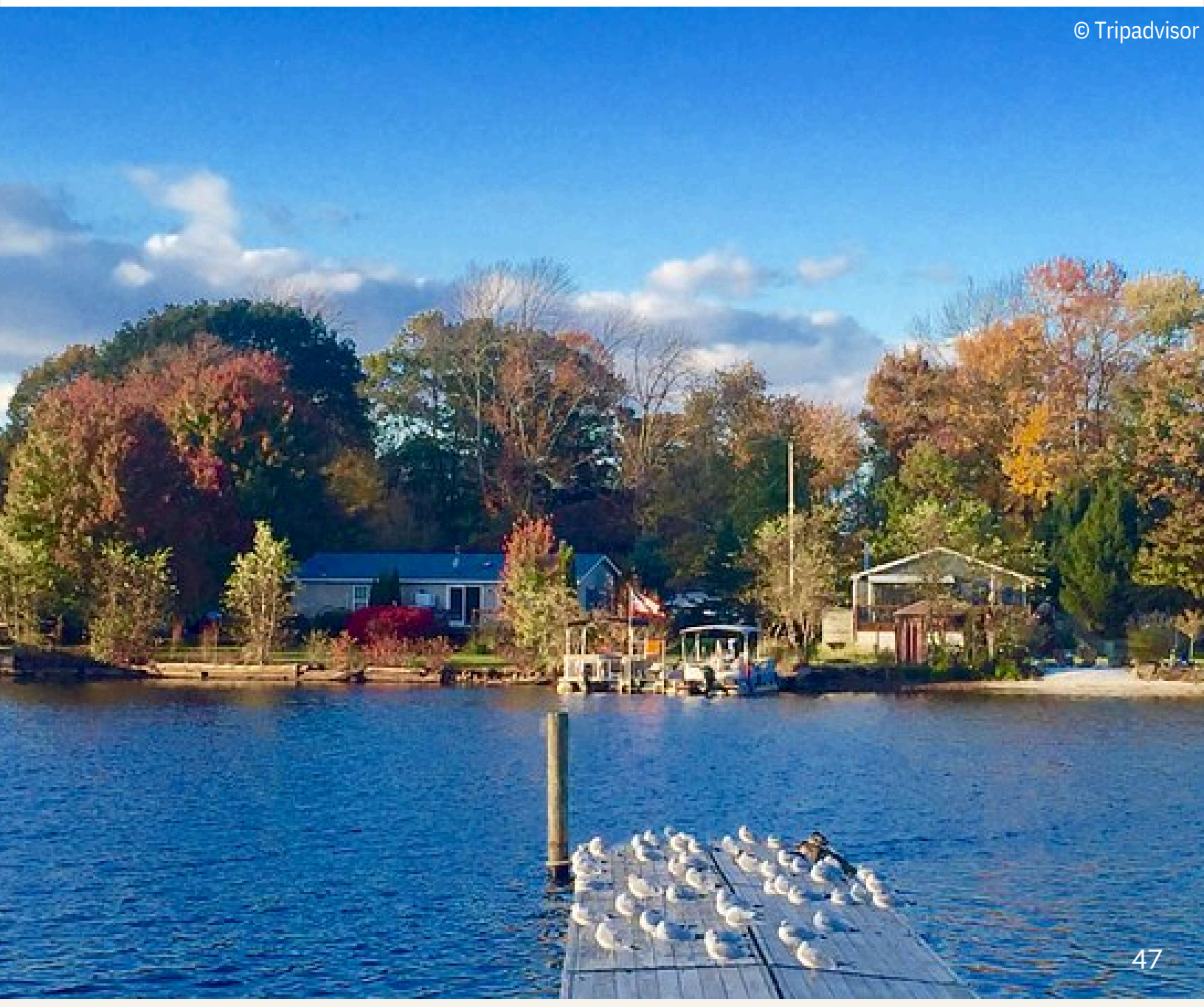
The Disability Resource Center webpage can be found [here](#). Additional links are listed below:

- [About the DRC](#)
- [Registered Students](#)

Disability Resource Center email address: [DRC@northeastern.edu](mailto:DRC@northeastern.edu)

# 16. PLACES TO VISIT

© Tripadvisor





Are you an explorer? Love to visit beautiful places? If so, we have the best eye-catching places near our campus:

## 1. Washington Monument



The Washington Monument was built to honor and memorializes George Washington, the first president of the United States. The 555-foot marble obelisk towers over Washington, D.C. at the center of the nation's capital.

Visitors to the Washington Monument are allowed access to the observation deck via the elevator or stairs, where you can enjoy panoramic views of the National Mall and surrounding areas. However, due to the confined space and safety considerations, the number of people allowed at the top is controlled, and it's not designed for large crowds. Although it is free and open to the public, guests need to get tickets in order to tour the monument.

[Washington Monument](#)

## 2. Lincoln Memorial



The Lincoln Memorial honors the 16th and greatest president of the United States, and symbolizes his belief in the freedom and dignity of all people.

[Lincoln Memorial](#)

## 3. Marine Corps War Memorial



The Marine Corps War Memorial in Arlington, Virginia, immortalizes the bravery of Marines who raised the American flag atop Mount Suribachi during the Battle of Iwo Jima. Standing over 32 feet tall, the bronze sculpture captures a moment of triumph amidst the chaos of war. Visitors from around the world come to pay their respects and reflect on the sacrifices made by generations of

Marines. The memorial's serene landscape provides a tranquil space for contemplation and remembrance. Inscribed with the names of Marine Corps Medal of Honor recipients, it serves as a powerful reminder of the enduring commitment to duty, honor, and service.

[Marine Corps War Memorial](#)

#### 4. Smithsonian National Museum of Natural History



The Smithsonian National Museum of Natural History, located in Washington, D.C., is a world-renowned institution dedicated to exploring the wonders of the natural world. With over 145 million specimens and artifacts, it offers visitors a glimpse into Earth's diverse ecosystems and evolutionary history. Exhibits range from dinosaur fossils to gemstones, showcasing the breadth of natural phenomena. The museum's educational programs and interactive displays engage visitors of all ages, fostering a deeper appreciation for the planet's biodiversity. As a leading center for scientific research and discovery, it continues to inspire curiosity and conservation efforts worldwide.

[Smithsonian National Museum of Natural History](#)



## 5. National Air and Space Museum:



The National Air and Space Museum, part of the Smithsonian Institution in Washington, D.C., is a premier destination for aerospace enthusiasts and history buffs alike. Home to the world's largest collection of aviation and space artifacts, it offers a comprehensive exploration of humanity's journey into the skies and beyond. From the Wright brothers' first flight to the Apollo lunar missions, the museum showcases iconic aircraft and spacecraft that have shaped our understanding of flight and exploration. Interactive exhibits and immersive experiences provide visitors with insight into the science and technology behind aviation and space travel. As a testament to human ingenuity and exploration, the museum continues to inspire generations to reach for the stars.

[National Air and Space Museum](https://www.nasa.gov/visit/282828/2025-01-01-2025-01-01/)

## 6. Smithsonian's National Zoo:



The Smithsonian's National Zoo, nestled in Washington, D.C., is a cherished haven for wildlife conservation and education. Home to over 2,700 animals representing nearly 400 species, it provides visitors with unforgettable encounters with creatures from around the globe. From giant pandas to majestic lions, the zoo offers a diverse array of exhibits that highlight the beauty and diversity of Earth's ecosystems. Through innovative research and conservation initiatives, the zoo is dedicated to protecting endangered species and promoting environmental stewardship. As a beloved institution for families and animal lovers, it continues to inspire a deeper appreciation for the natural world and the importance of conservation efforts.

[Smithsonian's National Zoo](#)

## 7. DC Boat Tours:



DC Boat Tours offer a unique perspective on the capital's iconic landmarks, gliding along the Potomac River with stunning views of the Washington Monument, Lincoln Memorial, and Jefferson Memorial. Experienced guides provide insightful commentary, sharing fascinating historical and cultural anecdotes as passengers cruise past famous sites. With a variety of tour options available, including daytime sightseeing cruises and romantic sunset excursions, there's something for every visitor to enjoy. Whether you're a history enthusiast or simply looking to relax on the water, DC Boat Tours offer an unforgettable way to experience the beauty and grandeur of Washington, D.C. Sit back, relax, and let the gentle rhythm of the river carry you on an unforgettable journey through the heart of the nation's capital.

[DC Boat Tours](#)

8. Hamilton Live - [Hamilton Live](#)
9. Theodore Roosevelt island - [Theodore Roosevelt island](#)
10. International Spy Museum - [International Spy Museum](#)
11. Botanical Garden - [Botanical Garden](#)
12. National Gallery of Art - [National Gallery of Art](#)
13. The National portrait Gallery - [The National portrait Gallery](#)
14. Artechouse - [Artechouse](#)

Google maps link given here for you all to find your best way to travel.

Note - Maps routes shows from our Campus to the Places.

## **17. Restaurants near Campus**

We have listed a few of our favorite places near campus to eat!

1. Rhodeside Grill
2. Lyon Hall - Clarendon
3. The Board Room
4. Spice Craft
5. Delhi Dhaba
6. McDonalds
7. Taco Bell
8. Chipotle



# 18. INTEREST GROUPS ON CAMPUS



## Tarang

Mission Statement: Our mission at Tarang is to foster a vibrant and inclusive community that celebrates the rich tapestry of Indian culture at Northeastern's Arlington campus. We aspire to create an atmosphere of unity and diversity where students from all backgrounds can come together to explore, learn, and immerse themselves in the colorful mosaic of Indian heritage.

Student Contacts: Pradhyumna Soni ([soni.pra@northeastern.edu](mailto:soni.pra@northeastern.edu)) and Neha Gopinath ([gopinath.n@northeastern.edu](mailto:gopinath.n@northeastern.edu))

## Women in STEM

Mission Statement: Our group's mission is to create a supportive community that promotes women in science, technology, engineering, and mathematics (STEM) fields, with a focus on fostering diversity and empowerment.

Student Contacts: Pingsi Zhong ([zhong.pi@northeastern.edu](mailto:zhong.pi@northeastern.edu)) and Yao Chen ([chen.yao4@northeastern.edu](mailto:chen.yao4@northeastern.edu))

## Arlington Programming Club

Mission Statement: To give students opportunities in order to interact with others around the subject of programming outside of the classroom.

Student Contacts: Justin Pak ([pak.ju@northeastern.edu](mailto:pak.ju@northeastern.edu)) and Doris Qu ([qu.siz@northeastern.edu](mailto:qu.siz@northeastern.edu))

## Arlington Explorers Club

Student Contacts: Akash Sancheti ([sancheti.ak@northeastern.edu](mailto:sancheti.ak@northeastern.edu))

## The Fusion Forum

Mission Statement: The Fusion Forum is dedicated to fostering cross-disciplinary collaboration and knowledge sharing among students from diverse academic backgrounds. Our mission is to create a vibrant and inclusive platform where students can come together to exchange ideas, insights, and perspectives from their respective fields of study. Through meaningful events, workshops, and dialogues we aim to promote a culture of interdisciplinary learning, innovation, and personal growth. Our goal is to empower our Northeastern's Arlington community to broaden their horizons, develop critical thinking skills, and address complex challenges by harnessing the collective wisdom of our academic community.

Student Contacts: Tharun Cota ([c.t@northeastern.edu](mailto:c.t@northeastern.edu)) and Suhas K M ([km.s@northeastern.edu](mailto:km.s@northeastern.edu))

# 19. BLOGS







**Dr. Ronna Halbgewachs Associate Dean  
and Campus Administrator**

As Associate Dean and Campus Administrator for the Arlington campus, Ronna facilitates the planning and delivery of academic programs in collaboration with faculty and staff across Northeastern's colleges and global network. Her leadership role also includes coordination and delivery of student services; experiential learning opportunities; facilities and campus operations; events management; diversity, equity, inclusion, and belonging initiatives; strategic planning; budget planning and financial management; licensure and regulatory compliance; and accreditation processes and protocols.

Ronna is a proven strategist and executor who has been leading entrepreneurial ventures and transformative change in higher education for more than 20 years. Among Ronna's major contributions are collaboratively launching the Northeastern Arlington Campus, teaming-up to establish and grow the George Washington (GW) University School of Nursing which ranked among the top 50 nursing schools in year 1 by *US News & World Report*, leading a team to attain a \$15 million NIH grant (largest NIH grant at GW at the time), having a key leadership role in the major restructuring of GW medical center, managing strategic planning and leading communications and marketing for GW medical center and then the nursing school, and launching an entrepreneurial business strategy to diversify and increase school revenue and achieving 146% of the entrepreneurial revenue goal in year one.

Ronna is committed to social justice and equity. She served on the GW President's inaugural Council for Diversity & Inclusion and two Deans' Councils for Diversity, Equity, & Inclusion, and has led and collaborated on myriad initiatives and programs.

Prior to joining Northeastern, Ronna's roles in higher education at the George Washington (GW) and Georgetown Universities included Assistant Vice President for Planning & Health Affairs (GW), Assistant Dean for Strategic Management (GW), and Assistant Dean for Entrepreneurial Enterprises & Strategic Initiatives (GW), among others.

Ronna earned her EdD and MBA at George Washington University, MA at Georgetown University, and BA at The College of Wooster.



**Tyler Leslie**  
**Academic Advisor and Program Manager**

Hello COE Arlington students! I hope this message finds you well and ready to embark on an exciting academic journey. My name is Tyler Leslie, and I am thrilled to introduce myself as your new academic advisor and program manager. I wanted to take a moment to extend a warm welcome.

As your academic advisor, my primary goal is to support you in achieving your academic and professional goals. With a small case load of students, I am dedicated to providing personalized assistance and guidance tailored to your individual needs. Whether you have questions about course selection, program requirements, or career opportunities, I am here to help. email me at COE Arlington Grad Advising ([coe-arlington-gradadvising@northeastern.edu](mailto:coe-arlington-gradadvising@northeastern.edu))

It's essential to stay connected and informed about what's happening in the COE Arlington community. I encourage you to check your NU email regularly for important updates, announcements, and opportunities. There are many exciting events, workshops, and guest speaker sessions planned throughout the year, and I wouldn't want you to miss out on any of them.



**Emily Mazzola**

**Assistant Director of Student Recruitment and Enrollment**

Hi! I'm Emily; I am the Assistant Director of Student Recruitment and Enrollment. My role at Northeastern Arlington is to help with any needs before you become an official student here. I do some traveling to different areas of the country, but mainly within the National Capital Region. I also do individual appointments, host events on and off-campus, and sometimes do tours of campus. I am always available to help with anything to do with Northeastern Arlington!

I grew up mainly in New Jersey, right outside of New York City but I have grown up in Japan. I have been calling Virginia home for 10 years, living in Arlington for a short while. I have worked in higher education for over 5 years and enjoy working with all different types of students. It is a joy to see students finding their home away from home and excelling in their programs. Northeastern Arlington is no different.

During my free time, I enjoy trying new restaurants with friends, but also baking cookies and bread at home. I also love running during nice days, reading a good book, and drinking lots and lots of tea/coffee!





## **Neha Gopinath**

### **Graduate Student Ambassador of College of Engineering - Arlington**

Hi Everyone!! I'm Neha Gopinath, an Information Systems MS student at the Arlington campus. I completed my bachelor's degree from India in Computer Science with 22+ months of work experience as a Product Engineer at SAP Labs India. Apart from academics and work, I love singing, exploring places, driving, and cooking. My favorite sport is badminton for which I have had a good share of wins and trophies. I am happy to communicate with new people who have questions about our Arlington Campus .